



MONTHLY MEMBERSHIP PROGRESS REPORT

District 7 O

Results as of: 1/31/2017

GMT: HAL GRIFFIN

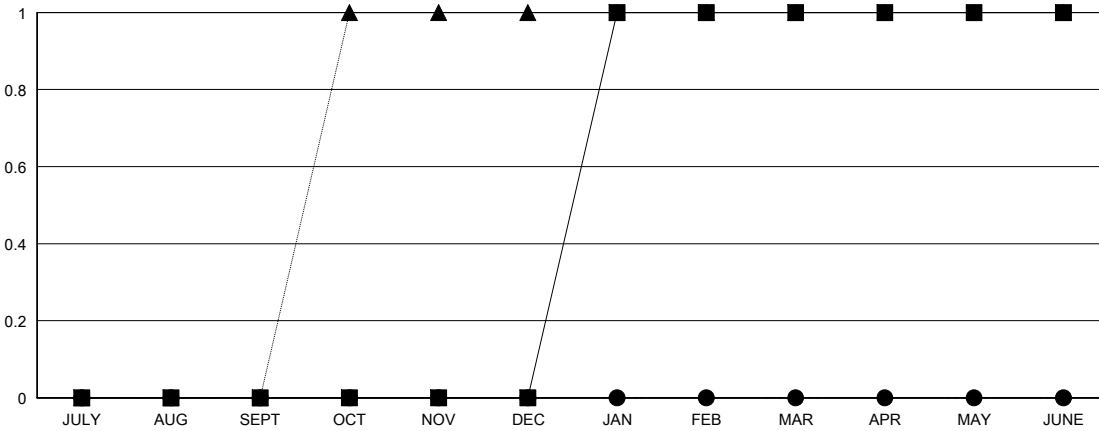
LOCATION ARKANSAS

GMT CA

Clubs			
RESULTS FOR 2016-2017			
QUARTER	NEW CLUB GOAL	NEW CLUBS	DROPPED CLUBS
JULY/AUG/SEPT	0	0	0
OCT/NOV/DEC	0	0	0
JAN/FEB/MAR	1	0	0
APR/MAY/JUNE	0	0	0

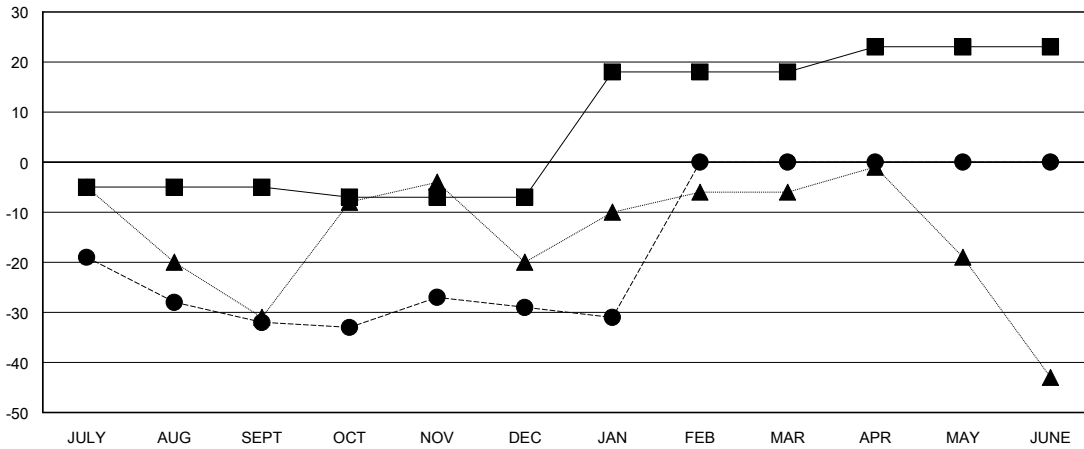
Members			
RESULTS FOR 2016-2017			
QUARTER	NEW MEMBER GROWTH NET GOAL (not reinstated or transfers)	NEW MEMBER GROWTH ACTUAL (not reinstated or transfers)	DROPPED MEMBERS ACTUAL (including transfers)
JULY/AUG/SEPT	-5	14	46
OCT/NOV/DEC	-2	21	18
JAN/FEB/MAR	25	8	10
APR/MAY/JUNE	5	0	0

GOALS AND ACTUAL NEW CLUBS CUMULATIVE



- - CURRENT YEAR GOALS FOR NEW CLUBS
- - CURRENT YEAR ACTUAL NEW CLUBS
- ▲ - LAST YEAR ACTUAL NEW CLUBS

GOALS AND ACTUAL MEMBERS CUMULATIVE



- - NEW MEMBER GROWTH NET GOAL
- - NEW MEMBER GROWTH ACTUAL
- ▲ - LAST YEAR MEMBERSHIP ACTUAL

DROPPED CLUBS: 0	14 CLUBS OF 30 ADDED 1 OR MORE NEW MEMBERS	GENDER DISTRIBUTION
		MALE 446 (66.47%)
		FEMALE 225 (33.53%)
DROPPED MEMBERS	CLICK HERE FOR CUMULATIVE MEMBERSHIP DATA	TOTAL FAMILY UNIT MEMBERS 94
DECEASED 4		FAMILY MEMBERS PAYING HALF DUES 49
CLUB CANCELLED 0		
OTHER 70		
TOTAL 74		